

WM PC

LOADING RAMP
WITH CAPACITY
OF UP TO 1800
KG, SUITABLE FOR
LIGHT COMMERCIAL
VEHICLES. MORE THAN
500 SIZES AVAILABLE



LOAD CAPACITY

600 / 1000 / 1500 /
1800 kg



CUSTOMISED DIMENSIONS

Width from
60 to 137.5 cm
Length from
195 to 325 cm



HANDLING

External and internal
swivelling



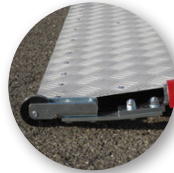
COLOUR

Red

LOAD CAPACITY: UP TO 1800 KG



Shot-blasted non-slip
aluminium surface



Wheel for assisted
deployment

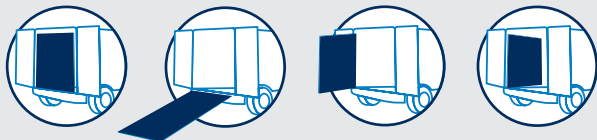


Self-positioning
adjustable feet



Mobile contact flap to
connect to the floor of the van





DEPLOYMENT AND CLOSING

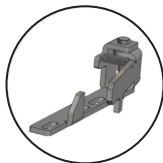
The PC is the most complete and practical of WM System's loading ramps. Suitable for most loading and weight requirements, it is extremely practical thanks to the patented horizontal swivel opening. The spring system balances the weight of the ramp during use, allowing it to be handled safely and easily by a single operator.

OPTIONAL EXTRAS



INTERNAL LATCH

Latch to secure the ramp in its fully swivelled position inside the vehicle.



WIND SAFETY KIT

Allows the ramp to be secured when swivelled fully outward. This feature ensures that gusts of wind cannot cause the ramp to rotate, with the risk of striking persons or objects.



SUPPLEMENTARY 3RD PIECE KIT

Reduces the ramp angle and results in three folding ramp sections. Ideal for use with small vehicles. Available with capacities up to 1,000 kg, max. width of 100 cm and fixed length of 80 cm.



REMOVABLE EXTENSION KIT

Third removable piece equipped with wheels, to be added to the ramp when necessary. Available for capacities up to 1500 kg.

APPLICATION SECTORS



CLEANING EQUIPMENT



BUILDING CONSTRUCTION



LAUNDRY TROLLEYS



GARDENING LAWN TRACTORS QUAD BIKES



VENDING MACHINES VIDEO SLOT MACHINES



PALLETS

| EXAMPLE MODELS | A (mm) | L (mm) | L2 (mm) | H (mm) | P (mm) | P1 (mm) | P2 (mm) | Capac. (Kg) | Weight* (Kg) |
|----------------|--------|--------|---------|--------|--------|---------|---------|-------------|--------------|
| PC 90 | 2200 | 1165 | 900 | 1215 | 95 | 250 | 8 | 600 | 81 |
| PC 95 | 2500 | 1215 | 950 | 1365 | 95 | 250 | 8 | 600 | 88 |
| PC 100 | 3000 | 1265 | 1000 | 1615 | 95 | 250 | 8 | 1000 | 106 |
| PC 100 | 3250 | 1265 | 1000 | 1740 | 95 | 250 | 8 | 1500 | 124 |
| PC 105 | 2700 | 1315 | 1050 | 1515 | 95 | 250 | 8 | 600 | 96 |
| PC 110 | 3000 | 1365 | 1100 | 1615 | 95 | 250 | 8 | 1500 | 131 |
| PC 110 | 2500 | 1365 | 1100 | 1365 | 95 | 250 | 8 | 1000 | 106 |
| PC 120 | 2700 | 1465 | 1200 | 1465 | 95 | 250 | 8 | 1000 | 117 |
| PC 120 | 3250 | 1465 | 1200 | 1740 | 95 | 250 | 8 | 1500 | 148 |
| PC 125 | 2800 | 1515 | 1250 | 1515 | 95 | 250 | 8 | 1000 | 128 |
| PC 125 | 3000 | 1515 | 1250 | 1615 | 95 | 250 | 8 | 1500 | 145 |
| PC 130 | 3000 | 1565 | 1300 | 1615 | 95 | 250 | 8 | 1000 | 139 |
| PC 130 | 3250 | 1565 | 1300 | 1740 | 95 | 250 | 8 | 1500 | 159 |
| PC 135 | 3200 | 1615 | 1350 | 1715 | 95 | 250 | 8 | 1500 | 160 |
| PC 135 | 3250 | 1615 | 1350 | 1740 | 95 | 250 | 8 | 1800 | 171 |

* The specified weight does not include the installation kit, which depends on the van (min. 2 kg - max. 7 kg)

